

Title:	How to add IP camera to Eagle Eye Cloud	Version:	v1.1	Date:	12042020
Product:	IPC G3 Platform, PCI series	Page:	1 of 5		
Action Required:	Information Only				

Supported IPC List

- **IPC G3 Platform, PCI series:**

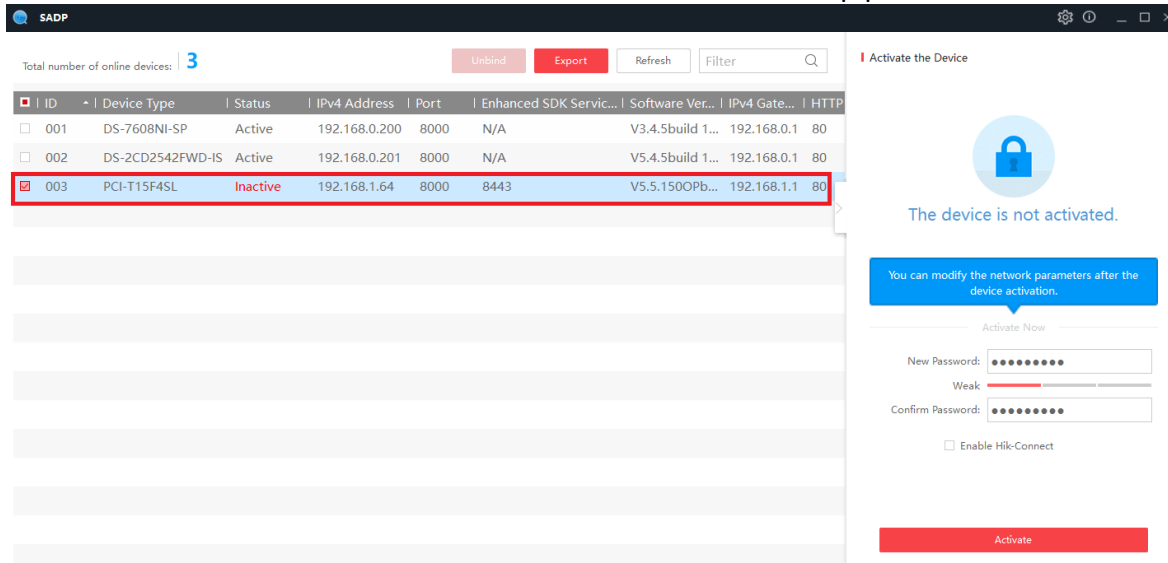
PCI-B12F2,PCI-B12F4,PCI-B12F6,PCI-B15F2,PCI-B15F4,PCI-B15F6,PCI-B18F2,PCI-B18F4,PCI-B18F6,PCI-B15F2SL,PCI-B15F4SL,PCI-B15F6SL,PCI-B15F2SL,PCI-B15F4SL,PCI-B15F6SL,PCI-D12F2,PCI-D12F4,PCI-D12F6,PCI-D15F2,PCI-D15F4,PCI-D15F6,PCI-T12F2,PCI-T12F4,PCI-T12F6,PCI-T15F2,PCI-T15F4,PCI-T15F6,PCI-T18F2,PCI-T18F4,PCI-T18F6,PCI-T12F2SL,PCI-T12F4SL,PCI-T12F6SL,PCI-T15F2SL,PCI-T15F4SL,PCI-T15F6SL,PCI-B12Z2,PCI-B15Z2,PCI-B18Z2,PCI-D12Z2,PCI-D15Z2,PCI-D18Z2,PCI-LB12F2,PCI-LB12F4,PCI-LB12F6,PCI-LB12F12,PCI-LB15F2,PCI-LB15F4,PCI-LB15F6,PCI-LB15F12,PCI-LB18F2,PCI-LB18F4,PCI-LB18F6,PCI-LB18F12,PCI-LB12F2SL,PCI-LB12F4SL,PCI-LB12F6SL,PCI-LB15F2SL,PCI-LB15F4SL,PCI-LB15F6SL,PCI-D14Z2H

- **IPC G3 Firmware: v5.5.150_OP_201113**

Before Adding IPC to Eagle Eye Cloud

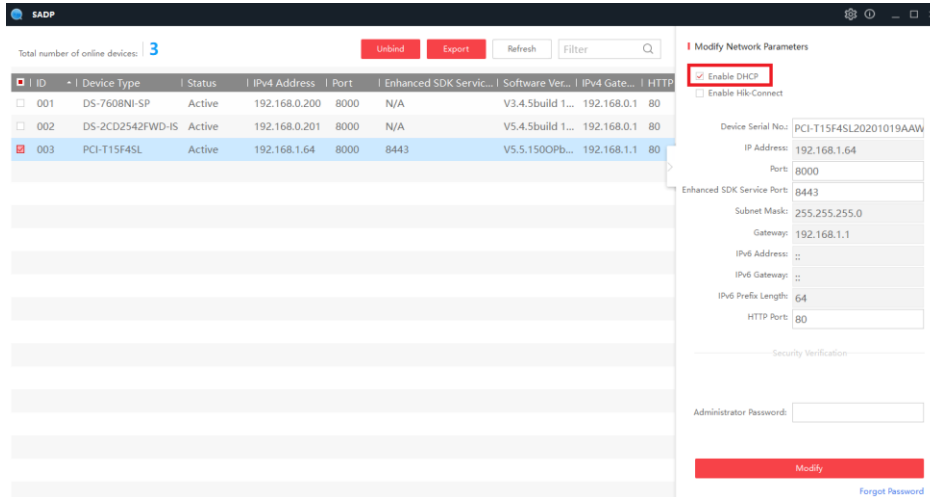
Use Hikvision SADP tool to active IP camera

1. Download Hikvision SADP tool to search and activate Hikvision IP camera.
<https://us.hikvision.com/en/support-resources/downloads/tools>
2. Use Hikvision SADP tool to activate Hikvision IP camera and setup password for administrator account



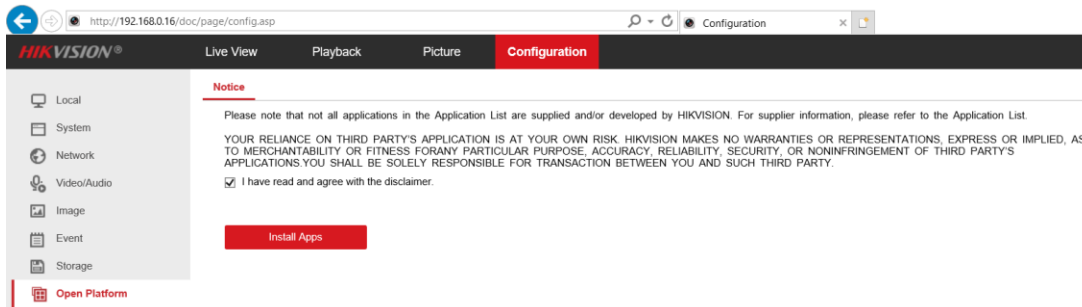
Title:	How to add IP camera to Eagle Eye Cloud	Version:	v1.1	Date:	12042020
Product:	IPC G3 Platform, PCI series	Page:	2 of 5		
Action Required:	Information Only				

3. Enable DHCP



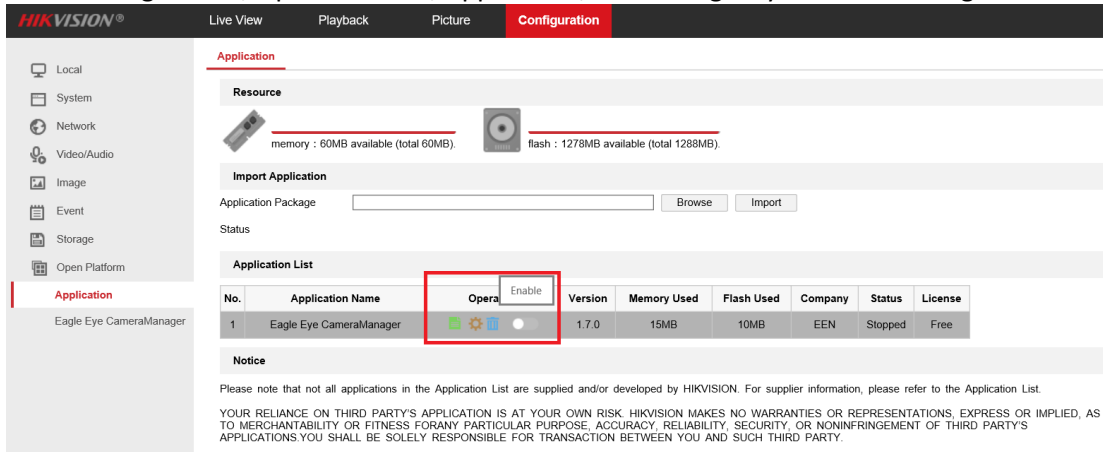
Install Eagle Eye App through camera web portal

1. Login Hikvision IP camera using Internet Explorer
2. Go to Configuration, Open Platform
3. Check “I have read and agree with the disclaimer” and Click on “Install Apps”



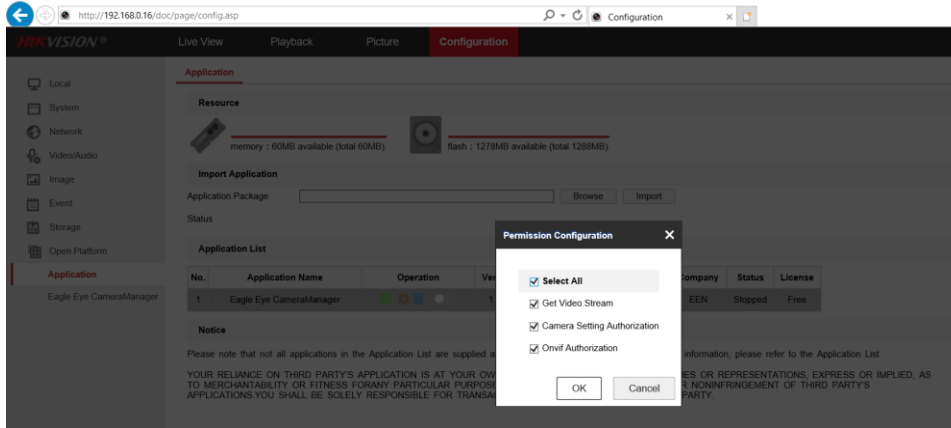
Setup Eagle Eye App permission

1. Go to Configuration, Open Platform, Application, Enable Eagle Eye CameraManager

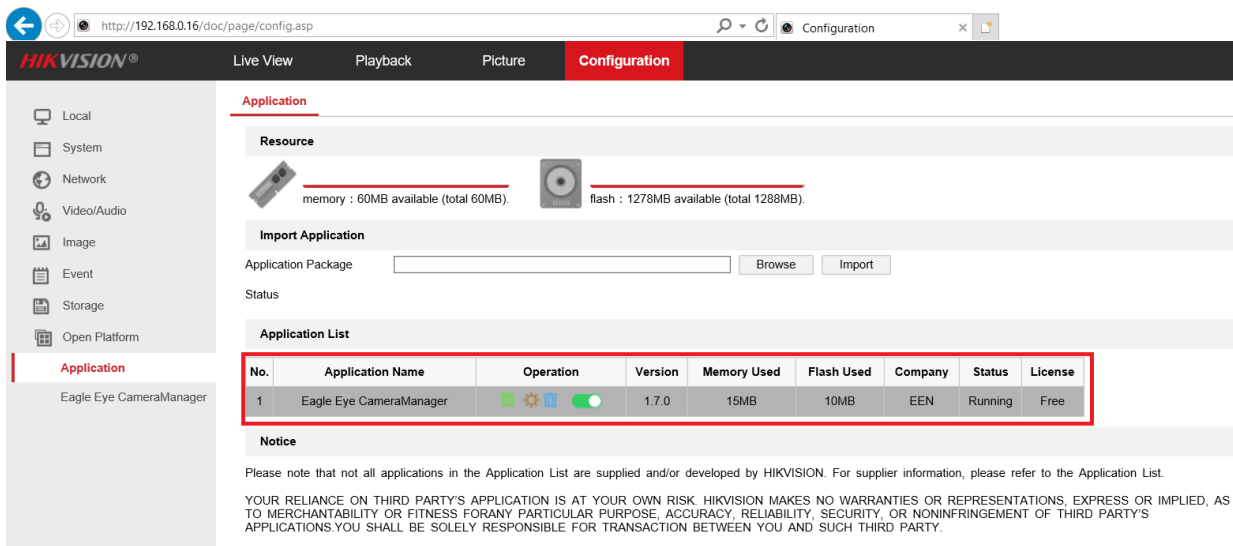


Title:	How to add IP camera to Eagle Eye Cloud	Version:	v1.1	Date:	12042020
Product:	IPC G3 Platform, PCI series			Page:	3 of 5
Action Required:	Information Only				

2. Under Permission Configuration, make sure Select All and Click on “OK”



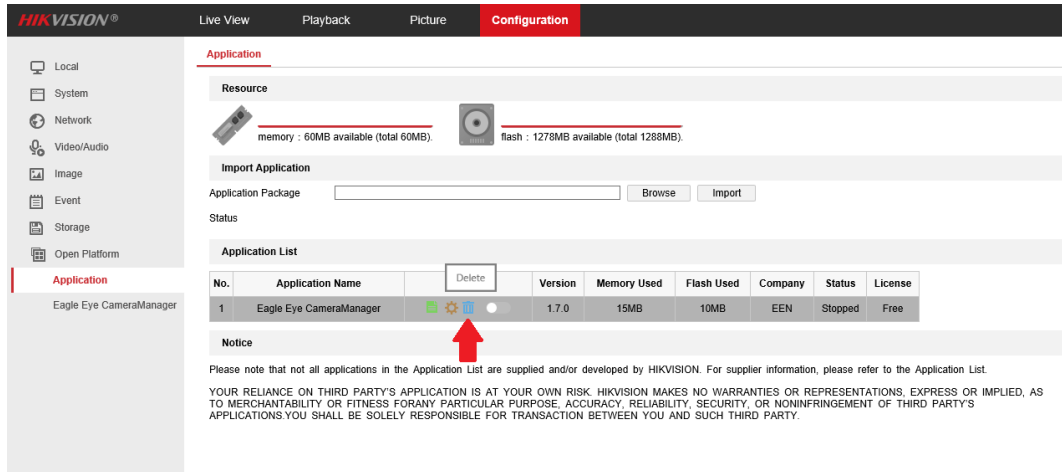
3. Now you will see Eagle Eye CameraManager is running



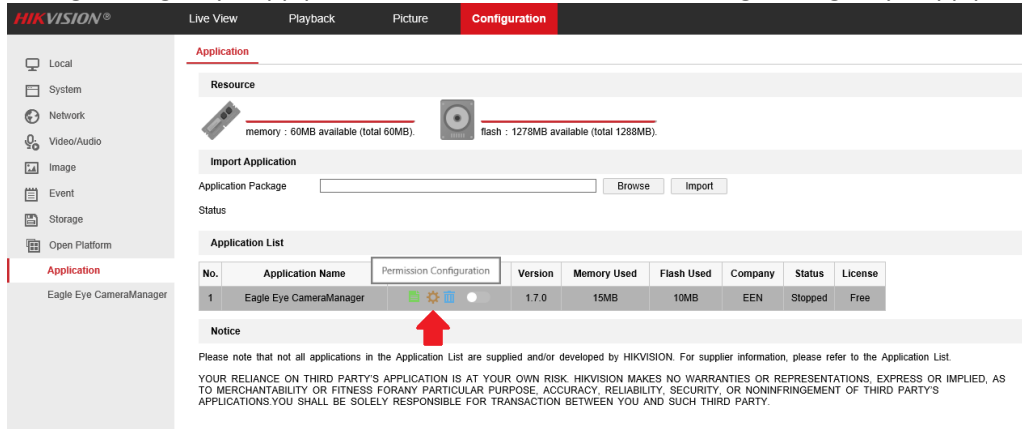
Configure Eagle Eye App

1. Delete Eagle Eye App: Select Trash Can icon to delete it

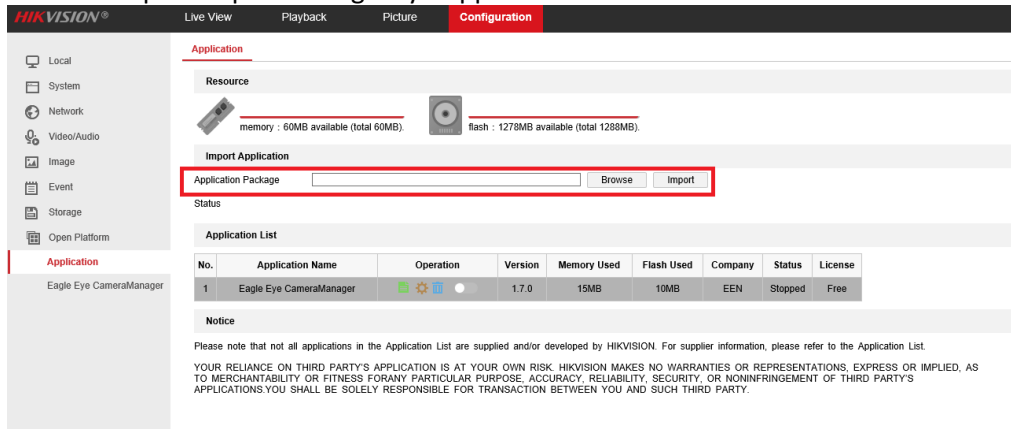
Title:	How to add IP camera to Eagle Eye Cloud	Version:	v1.1	Date:	12042020
Product:	IPC G3 Platform, PCI series	Page:	4 of 5		
Action Required:	Information Only				



2. Configure Eagle Eye App permission: Select Gear icon to configure Eagle Eye App permission



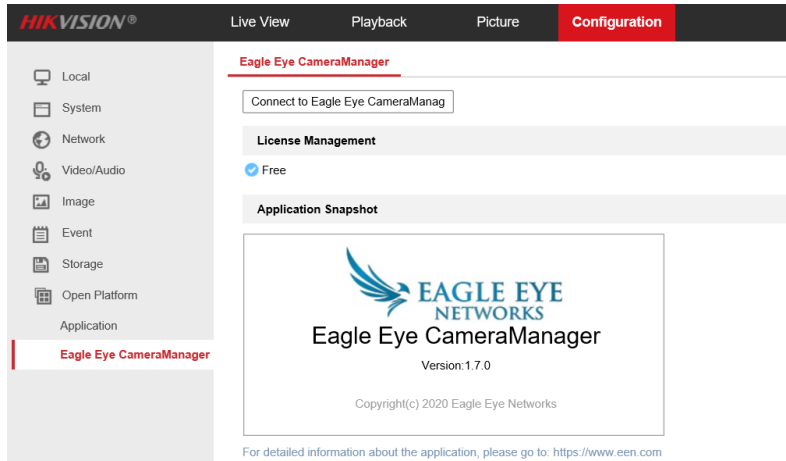
3. Upload updated Eagle Eye App: Click on Browse button to select updated Eagle Eye App file, then click on Import button to upload updated Eagle Eye App



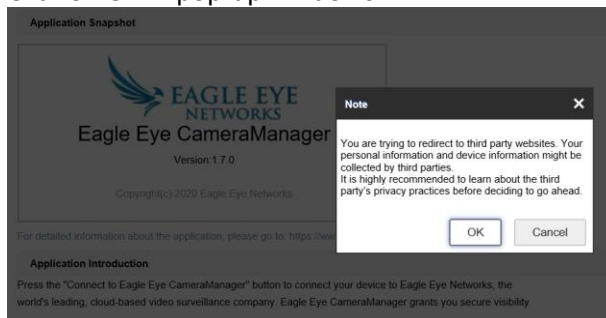
Register Eagle Eye cloud account

- Go to Configuration, Open Platform, Eagle Eye CameraManager

Title:	How to add IP camera to Eagle Eye Cloud	Version:	v1.1	Date:	12042020
Product:	IPC G3 Platform, PCI series			Page:	5 of 5
Action Required:	Information Only				



2. Click on Connect to Eagle Eye CameraManag on the top
3. Click on OK in pop-up windows



4. It will bring you to Eagle Eye cloud account registration page

Title:	How to add IP camera to Eagle Eye Cloud	Version:	v1.1	Date:	12042020
Product:	IPC G3 Platform, PCI series			Page:	6 of 5
Action Required:	Information Only				

Adding IPC to Eagle Eye Cloud

Add cameras through Eagle Eye Mobile App

1. Download Eagle Eye Camera Manager Mobile App: <https://www.een.com/cameramanager-mobile-app/>

Add cameras through Eagle Eye Web App

1. Go to <https://auth.cameramanager.com/>

Add cameras through Eagle Eye Desktop Client

1. Download Eagle Eye Camera Manager Desktop App: <https://www.een.com/cameramanager-mobile-app/>